

Wintec GPS Speaker-Microphone

The breaking innovative microphone speaker integrates smart GPS features, transmits data through two-way communication. Wintec WGT-168 provides the best assistant in group communication for climbing teams, hunting activities, wildlife games, rescue teams, and fleet management. .etc



Applications :

- * Check of transmitter's position by 2-way radio
- * Handy Navigation
- * Field survey by coordinates
- * Track log recording
- * Direction indicator

Key features :

- * LCD display : 120 x 160 4 level grayscale screen
- * Support major brands of radio (ex. Motorola, Wintec, Yaesu, Kenwood, Icom, ...) by optional types of cable.
- * Radio-transmitted coordinates, track the instant for position group up to 10 persons.
- * Built in GPS ATMEL chipset supporting 16 parallel channels (WAAS/EGNOS-enabled).
- * Built in electronic compass.
- * Track recording up to 50,000 points.
- * Group ID communication.
- * Become a G-mouse and PC-supported in navigation.
- * Powered by USB cable w/o battery, upgradeable MCU firmware.
- * PC software available for parameters setting, read GIS and log data, support different format like Google Earth KMZ, GPX, Virtual Earth.



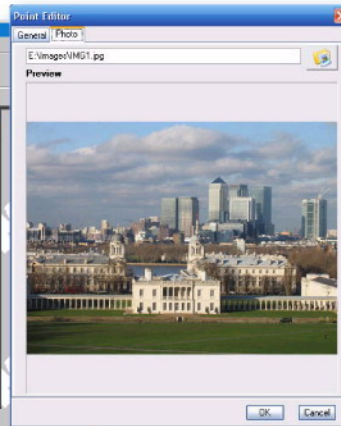
Wintec GPS Speaker-Microphone

WGT-168 Software Application

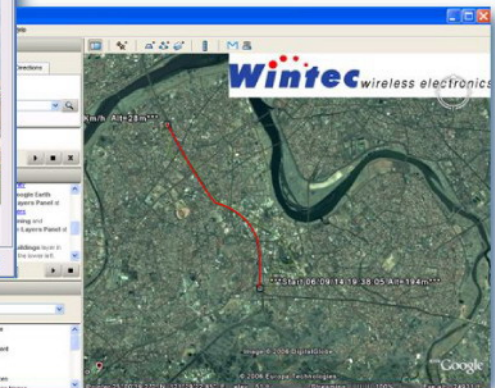
GPS Log management

Marked	Icon	Index	UTC Date Time	Local Date Time	Latitude (DDMM.DDDDD)	Longitude (DDMM.DDDDD)	Altitude (m)	Speed (km/h)
		1	2007/01/13 04:10:47	2007/01/13 12:10:47	25.005190	121.503610	6	3
		2	2007/01/13 04:11:03	2007/01/13 12:11:03	25.005070	121.503580	6	6
		3	2007/01/13 04:11:09	2007/01/13 12:11:09	25.005150	121.503710	6	3
		4	2007/01/13 04:11:10	2007/01/13 12:11:10	25.005150	121.503710	6	3
		5	2007/01/13 04:11:26	2007/01/13 12:11:26	25.005120	121.503610	6	6
		6	2007/01/13 04:11:32	2007/01/13 12:11:32	25.005190	121.503570	6	4
		7	2007/01/13 04:11:33	2007/01/13 12:11:33	25.005160	121.503580	6	3
		8	2007/01/13 04:11:39	2007/01/13 12:11:39	25.005210	121.503690	6	6
		9	2007/01/13 04:11:45	2007/01/13 12:11:45	25.005190	121.503660	6	8
		10	2007/01/13 04:11:51	2007/01/13 12:11:51	25.005130	121.503610	6	7
		11	2007/01/13 04:11:57	2007/01/13 12:11:57	25.005130	121.503640	6	6
		12	2007/01/13 04:12:03	2007/01/13 12:12:03	25.005130	121.503640	6	7

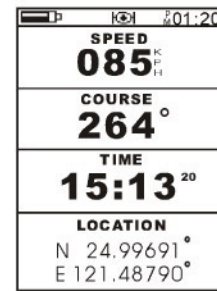
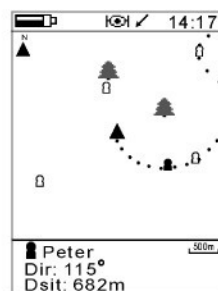
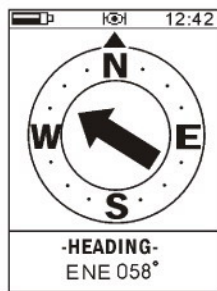
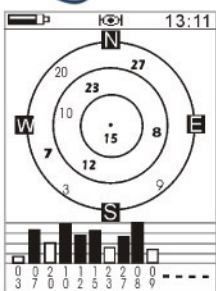
write coordinates
into Jpeg Exif



Display the tracks on
Google Earth



Display satellite status



Specification

Dimension	59(W) x 114(H) x 30(D)mm
Weight	Approx 108g (without battery and cable)
LCD	120 x 160 4 level gray LCD
Microphone	Capacitance microphone
Speaker	1W / 8ohm
Power	DC 3.7V / 1200mAH Li-polymer battery
Battery operation time	18Hrs (backlight off)
Temperature range	-20°C ~ +70°C
Compass	Accuracy : ±5 degrees (This need to be calibrated by user manually) Resolution : ±1 degrees
Thermometer	-20 ~ +50 Accuracy ±2 degrees.

Packing List :

- WGT-168 X 1
- Belt clip 、 USB Cable & Battery X 1
- Operation manual & Software CD X 1
- Radio Interface Cable need Optional